

# \$529,888 - 6469 King Wynd, Edmonton

MLS® #E4433134

**\$529,888**

4 Bedroom, 3.50 Bathroom, 1,638 sqft

Single Family on 0.00 Acres

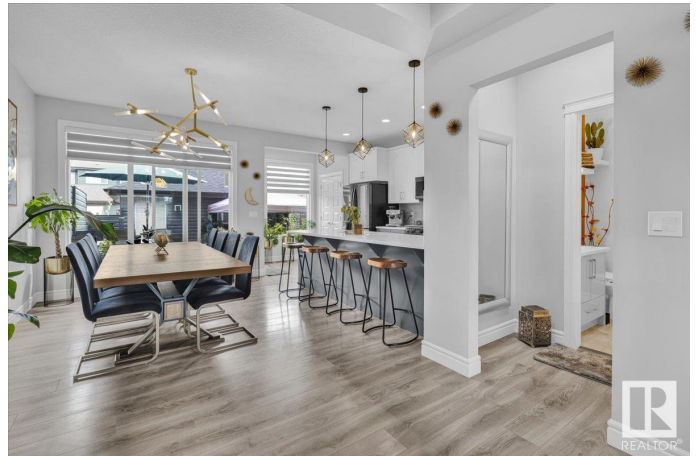
Keswick Area, Edmonton, AB

Modern, well-maintained half duplex in the sought-after Keswick community! Bright natural light pours into the open-concept layout, featuring a stylish kitchen with stainless steel appliances. Comes fully furnished - ready to enjoy with a developed basement and side entry. Detached garage includes a window, epoxy floor, R20 insulation, textured ceilings, and painted drywall. Enjoy the fully landscaped, fully fenced yard with a spacious two-level deckâ€”perfect for relaxing or entertaining. Move-in ready with upgraded finishes throughout, this home is steps from scenic ponds, parks, and walking trails. A perfect blend of style, comfort, and location!! HOA TBD

Built in 2020

## Essential Information

|                |           |
|----------------|-----------|
| MLS® #         | E4433134  |
| Price          | \$529,888 |
| Bedrooms       | 4         |
| Bathrooms      | 3.50      |
| Full Baths     | 3         |
| Half Baths     | 1         |
| Square Footage | 1,638     |
| Acres          | 0.00      |
| Year Built     | 2020      |



|          |               |
|----------|---------------|
| Type     | Single Family |
| Sub-Type | Half Duplex   |
| Style    | 2 Storey      |
| Status   | Active        |

### Community Information

|             |                |
|-------------|----------------|
| Address     | 6469 King Wynd |
| Area        | Edmonton       |
| Subdivision | Keswick Area   |
| City        | Edmonton       |
| County      | ALBERTA        |
| Province    | AB             |
| Postal Code | T6W 3Z9        |

### Amenities

|           |  |
|-----------|--|
| Amenities | Deck, See Remarks                              |
| Parking   | Double Garage Detached, Insulated, See Remarks |

### Interior

|                   |  |
|-------------------|--|
| Interior Features | ensuite bathroom   |
| Appliances        | Dishwasher-Built-In, Dryer, Furniture Included, Microwave Hood Fan, Refrigerator, Stove-Electric, Washer, Window Coverings |
| Heating           | Forced Air-1, Natural Gas  |
| Fireplace         | Yes  |
| Fireplaces        | Insert   |
| Stories           | 3  |
| Has Basement      | Yes  |
| Basement          | Full, Finished   |

### Exterior

|                   |   |
|-------------------|---|
| Exterior          | Wood, Vinyl, Hardie Board Siding  |
| Exterior Features | Airport Nearby, Back Lane, Fenced, Landscaped, Playground Nearby, Public Transportation, Schools, Shopping Nearby, Stream/Pond, See Remarks |
| Roof              | Asphalt Shingles  |
| Construction      | Wood, Vinyl, Hardie Board Siding  |
| Foundation        | Concrete Perimeter  |

### Additional Information

|             |                  |
|-------------|------------------|
| Date Listed | April 28th, 2025 |
|-------------|------------------|

|                |          |
|----------------|----------|
| Days on Market | 1        |
| Zoning         | Zone 56  |
| HOA Fees       | 1        |
| HOA Fees Freq. | Annually |

DATA IS DEEMED RELIABLE BUT IS NOT GUARANTEED ACCURATE BY THE REALTORS® ASSOCIATION OF EDMONTON. COPYRIGHT 2025 BY THE REALTORS® ASSOCIATION OF EDMONTON. ALL RIGHTS RESERVED.Trademarks are owned or controlled by the Canadian Real Estate Association (CREA) and identify real estate professionals who are members of CREA (REALTOR®, REALTORS®) and/or the quality of services they provide (MLS®, Multiple Listing Service®)

Listing information last updated on April 29th, 2025 at 8:02am MDT