

Courtesy Of Andy T Huynh Of Exp Realty

# \$517,900 - 832 Rowan Close, Edmonton

MLS® #E4431996

**\$517,900**

3 Bedroom, 2.50 Bathroom, 1,707 sqft  
Single Family on 0.00 Acres

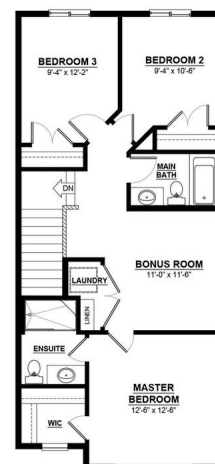
The Orchards At Ellerslie, Edmonton, AB

Welcome to your dream home in The Orchards at Ellerslie, a vibrant and picturesque community in South Edmonton! This stunning new build "Tiguan" Model built by Daytona Homes offers 3 spacious bedrooms, 2.5 bathrooms, and a separate side entrance, making it perfect for growing families or future legal suite. Nestled in a naturally beautiful area, The Orchards is defined by its fruit trees, colorful blossoms, and oversized green spaces. Residents enjoy exclusive access to a private club with a recreation center, spray park, and picnic area, making it a haven for family fun. Tree-lined walkways and parks offer the perfect backdrop for outdoor activities, while the rich architectural details and affordable pricing make this one of south Edmonton's most sought-after communities. Don't miss out on this perfect blend of style, space, and location!

Built in 2025

## Essential Information

MLS® #	E4431996
Price	\$517,900
Bedrooms	3
Bathrooms	2.50
Full Baths	2
Half Baths	1



Square Footage	1,707
Acres	0.00
Year Built	2025
Type	Single Family
Sub-Type	Detached Single Family
Style	2 Storey
Status	Active

### **Community Information**

Address	832 Rowan Close
Area	Edmonton
Subdivision	The Orchards At Ellerslie
City	Edmonton
County	ALBERTA
Province	AB
Postal Code	T6X 3J4

### **Amenities**

Amenities	See Remarks
Parking	Parking Pad Cement/Paved

### **Interior**

Interior Features	ensuite bathroom
Appliances	Hood Fan
Heating	Forced Air-1, Natural Gas
Stories	2
Has Basement	Yes
Basement	Full, Unfinished

### **Exterior**

Exterior	Wood, Vinyl
Exterior Features	See Remarks
Roof	Asphalt Shingles
Construction	Wood, Vinyl
Foundation	Concrete Perimeter

### **Additional Information**

Date Listed	April 21st, 2025
Days on Market	3

Zoning                      Zone 53  
HOA Fees Freq.      Annually

DATA IS DEEMED RELIABLE BUT IS NOT GUARANTEED ACCURATE BY THE REALTORS® ASSOCIATION OF EDMONTON. COPYRIGHT 2025 BY THE REALTORS® ASSOCIATION OF EDMONTON. ALL RIGHTS RESERVED. Trademarks are owned or controlled by the Canadian Real Estate Association (CREA) and identify real estate professionals who are members of CREA (REALTOR®, REALTORS®) and/or the quality of services they provide (MLS®, Multiple Listing Service®)

Listing information last updated on April 24th, 2025 at 12:47am MDT