

\$559,900 - 1918 15 Avenue, Edmonton

MLS® #E4431993

\$559,900

4 Bedroom, 3.50 Bathroom, 1,638 sqft
Single Family on 0.00 Acres

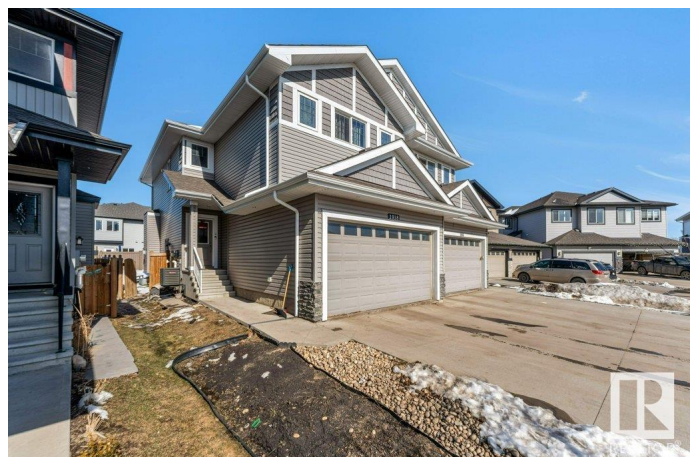
Laurel, Edmonton, AB

!!! Attention First time Home Buyers and Investors !!! Look no further as this beautiful Double Attached Garage Duplex has it all. Located in a peaceful CUL-DE-SAC in the heart of South Edmonton- Laurel community. Grand Open to below foyer welcomes you to this upgraded house with spindle railing. Main floor is open-concept that includes a spacious living room with a gas fireplace, a dining area, an upgraded kitchen with quartz countertops, a walk-in pantry, and a half bath. Upstairs, humongous sized primary bedroom has an en-suite, along with a huge bonus room with big windows, two additional bedrooms, and another full bathroom. The Fully Finished BASEMENT with SEPARATE ENTRANCE offers a second living area, second kitchen, full bathroom, bedroom, and laundry room. Extra long DRIVEWAY give you peace of mind for 4 Car parking on it. Located within walking distance to all the Amenities.

Built in 2016

Essential Information

| | |
|------------|-----------|
| MLS® # | E4431993 |
| Price | \$559,900 |
| Bedrooms | 4 |
| Bathrooms | 3.50 |
| Full Baths | 3 |



| | |
|----------------|---------------|
| Half Baths | 1 |
| Square Footage | 1,638 |
| Acres | 0.00 |
| Year Built | 2016 |
| Type | Single Family |
| Sub-Type | Half Duplex |
| Style | 2 Storey |
| Status | Active |

Community Information

| | |
|-------------|----------------|
| Address | 1918 15 Avenue |
| Area | Edmonton |
| Subdivision | Laurel |
| City | Edmonton |
| County | ALBERTA |
| Province | AB |
| Postal Code | T6T 2B6 |

Amenities

| | |
|----------------|--------------------------------------|
| Amenities | Air Conditioner, Ceiling 9 ft., Deck |
| Parking Spaces | 6 |
| Parking | Double Garage Attached |

Interior

| | |
|-------------------|--|
| Interior Features | ensuite bathroom |
| Appliances | Air Conditioning-Central, Dishwasher-Built-In, Dryer, Garage Control, Garage Opener, Washer, Refrigerators-Two, Stoves-Two |
| Heating | Forced Air-1, Natural Gas |
| Fireplace | Yes |
| Fireplaces | Tile Surround |
| Stories | 3 |
| Has Basement | Yes |
| Basement | Full, Finished |

Exterior

| | |
|-------------------|--|
| Exterior | Wood, Vinyl |
| Exterior Features | Cul-De-Sac, Fenced, Playground Nearby, Public Transportation, Schools, Shopping Nearby |
| Roof | Asphalt Shingles |

Construction Wood, Vinyl
Foundation Concrete Perimeter

Additional Information

Date Listed April 21st, 2025
Days on Market 3
Zoning Zone 30

DATA IS DEEMED RELIABLE BUT IS NOT GUARANTEED ACCURATE BY THE REALTORS® ASSOCIATION OF EDMONTON. COPYRIGHT 2025 BY THE REALTORS® ASSOCIATION OF EDMONTON. ALL RIGHTS RESERVED. Trademarks are owned or controlled by the Canadian Real Estate Association (CREA) and identify real estate professionals who are members of CREA (REALTOR®, REALTORS®) and/or the quality of services they provide (MLS®, Multiple Listing Service®)

Listing information last updated on April 24th, 2025 at 12:32am MDT