

# \$539,900 - 21028 128 Avenue, Edmonton

MLS® #E4431702

**\$539,900**

3 Bedroom, 2.50 Bathroom, 1,701 sqft  
Single Family on 0.00 Acres

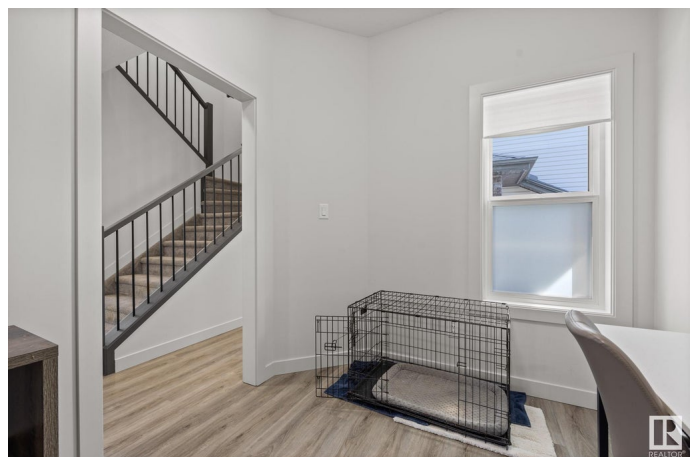
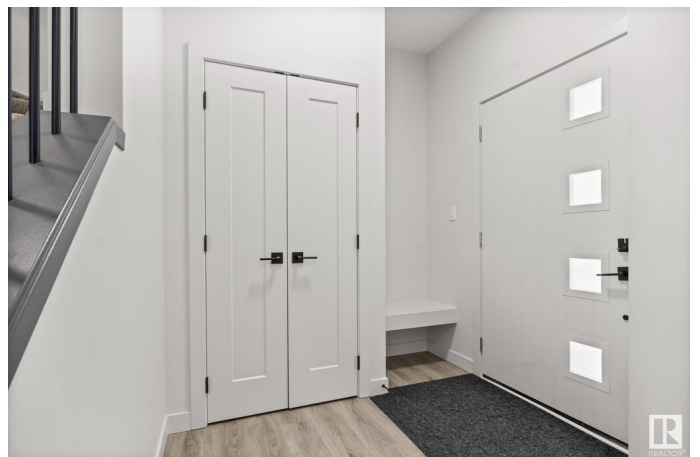
Trumpeter Area, Edmonton, AB

Have you been looking for a great family home steps to Big Lake, St. Albert, & the accessibility of the Henday at a GREAT VALUE?! Welcome to this stunning 3 bedroom + main floor den home in the sought-after community of Trumpeter with SIDE ENTRY! BACKING ONTO A PARK, youâ€™ll enjoy peaceful views as you look out into GREEN-SPACE (rather than another house)! Step inside to 1700 sqft of modern living space featuring a bright, open layout, a chefâ€™s kitchen with sleek two-tone cabinetry, premium appliances, & elegant finishings throughout. The spacious bonus room adds flexible living space for a home office, playroom, or cozy movie nights. Unwind in your relaxing primary suite complete with spa-like 4pc ensuite with double sinks! Outside, enjoy summer evenings on your finished deck overlooking your fully landscaped yardâ€”ready for entertaining or relaxing. This is the one youâ€™ve been waiting forâ€”beautifully finished, move-in ready, & perfectly located. Welcome home!

Built in 2023

## Essential Information

MLS® #	E4431702
Price	\$539,900
Bedrooms	3



Bathrooms	2.50
Full Baths	2
Half Baths	1
Square Footage	1,701
Acres	0.00
Year Built	2023
Type	Single Family
Sub-Type	Detached Single Family
Style	2 Storey
Status	Active

### **Community Information**

Address	21028 128 Avenue
Area	Edmonton
Subdivision	Trumpeter Area
City	Edmonton
County	ALBERTA
Province	AB
Postal Code	T5S 0R5

### **Amenities**

Amenities	Ceiling 9 ft.
Parking Spaces	2
Parking	Double Garage Attached

### **Interior**

Interior Features	ensuite bathroom
Appliances	Dishwasher-Built-In, Dryer, Garage Opener, Hood Fan, Refrigerator, Stove-Electric, Washer
Heating	Forced Air-1, Natural Gas
Fireplace	Yes
Fireplaces	Insert
Stories	2
Has Basement	Yes
Basement	Full, Unfinished

### **Exterior**

Exterior	Wood, Vinyl
Exterior Features	Backs Onto Park/Trees

Roof	Asphalt Shingles
Construction	Wood, Vinyl
Foundation	Concrete Perimeter

### **Additional Information**

Date Listed      April 18th, 2025

Days on Market    6

Zoning             Zone 59

DATA IS DEEMED RELIABLE BUT IS NOT GUARANTEED ACCURATE BY THE REALTORS® ASSOCIATION OF EDMONTON. COPYRIGHT 2025 BY THE REALTORS® ASSOCIATION OF EDMONTON. ALL RIGHTS RESERVED. Trademarks are owned or controlled by the Canadian Real Estate Association (CREA) and identify real estate professionals who are members of CREA (REALTOR®, REALTORS®) and/or the quality of services they provide (MLS®, Multiple Listing Service®)

Listing information last updated on April 24th, 2025 at 1:02am MDT