

# **\$850,000 - 53026 Rge Road 43, Rural Parkland County**

MLS® #E4430079

**\$850,000**

2 Bedroom, 2.00 Bathroom, 1,668 sqft

Rural on 0.17 Acres

Rizzie Beach, Rural Parkland County, AB

Your dream lakefront home awaits! Located on the stunning north shore of Lake Wabamun, this modern property offers breathtaking lake views, an oversized garage, and unbeatable tranquility. Just minutes from the Village of Wabamun and less than an hour from Edmonton, this is the perfect getaway for commuters or a peaceful retirement retreat. With over 1,600 sq ft of open-concept living space, vaulted ceilings, and high-end finishes, this home blends luxury and comfort. Host family gatherings, or enjoy the cozy ambiance for two. In addition to a second bedroom the flexible office space doubles as a guest room, and the heated garage is ideal for hobbyists seeking a workshop along with accommodating 2 cars. Step out from the south-facing living room or master bedroom onto a fully screened-in deck, where serene views of the park like reserve and lakefront will melt your stress away. This is your chance to own a piece of paradise. Act now—your lakeside retreat is waiting!

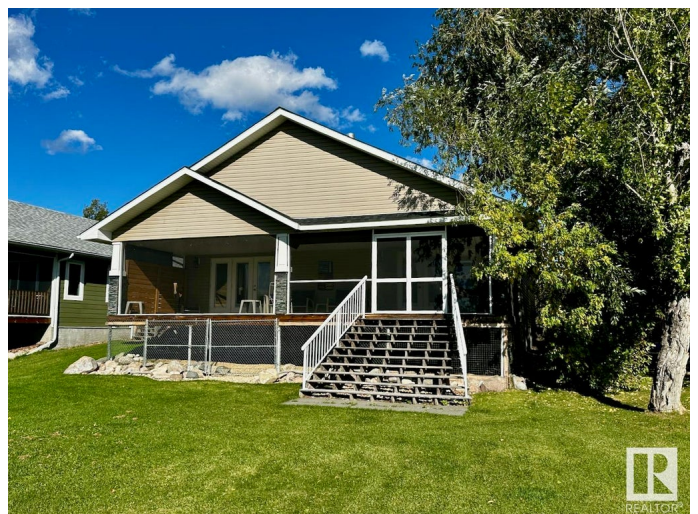
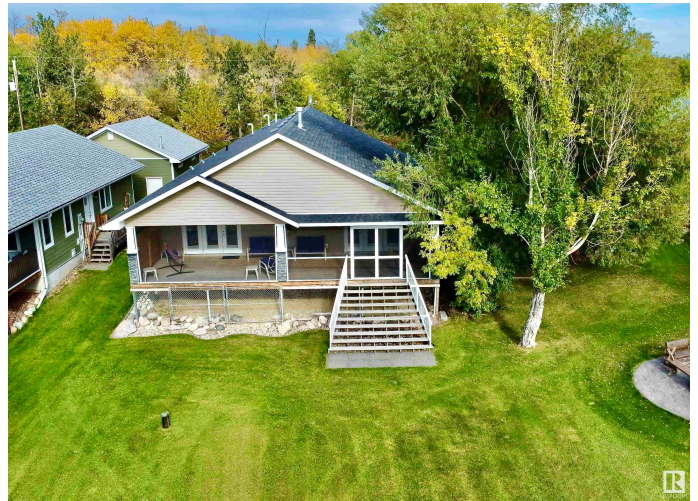
Built in 2011

## **Essential Information**

MLS® # E4430079

Price \$850,000

Bedrooms 2



Bathrooms	2.00
Full Baths	2
Square Footage	1,668
Acres	0.17
Year Built	2011
Type	Rural
Sub-Type	Detached Single Family
Style	Bungalow
Status	Active

### Community Information

Address	53026 Rge Road 43
Area	Rural Parkland County
Subdivision	Rizzie Beach
City	Rural Parkland County
County	ALBERTA
Province	AB
Postal Code	T0E 2K0

### Amenities

Features	Deck, Dog Run-Fenced In, Hot Water Instant, Lake Privileges, No Smoking Home, Vaulted Ceiling, Vinyl Windows
----------	--

### Interior

Interior Features	ensuite bathroom
Heating	Forced Air-1, Natural Gas
Fireplace	Yes
Stories	1
Has Basement	Yes
Basement	None, No Basement

### Exterior

Exterior	Prefab
Exterior Features	Backs Onto Park/Trees, Beach Access, Boating, Lake Access Property, Lake View, Level Land, No Through Road, Recreation Use, Waterfront Property
Construction	Prefab
Foundation	Concrete Perimeter, Piling

### Additional Information

Date Listed April 10th, 2025

Days on Market 9

Zoning Zone 93

DATA IS DEEMED RELIABLE BUT IS NOT GUARANTEED ACCURATE BY THE REALTORS® ASSOCIATION OF EDMONTON. COPYRIGHT 2025 BY THE REALTORS® ASSOCIATION OF EDMONTON. ALL RIGHTS RESERVED. Trademarks are owned or controlled by the Canadian Real Estate Association (CREA) and identify real estate professionals who are members of CREA (REALTOR®, REALTORS®) and/or the quality of services they provide (MLS®, Multiple Listing Service®)

Listing information last updated on April 19th, 2025 at 7:17am MDT