

\$234,500 - 103 Riverbend Road, Rural Sturgeon County

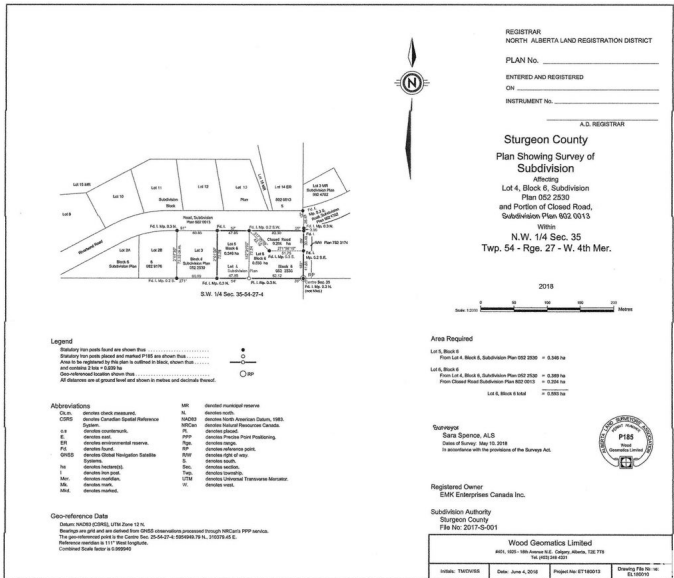
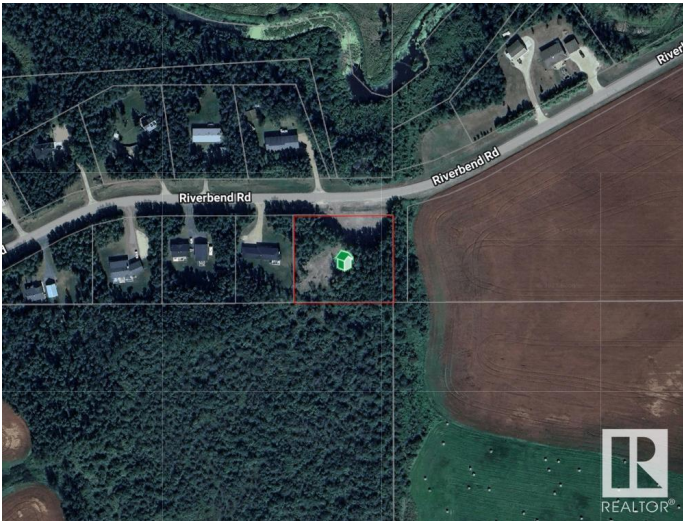
MLS® #E4429365

\$234,500

0 Bedroom, 0.00 Bathroom,
Rural on 1.47 Acres

Shil Shol Estate, Rural Sturgeon County, AB

Build your country home on a private treed 1.47 acre lot with a south facing back yard. Only one neighbor to the west, a farmers field to the east and treed land to the south. Located just south of Highway 37 off Range Rd 271 and approximately 20 minutes from St. Albert and Spruce Grove.



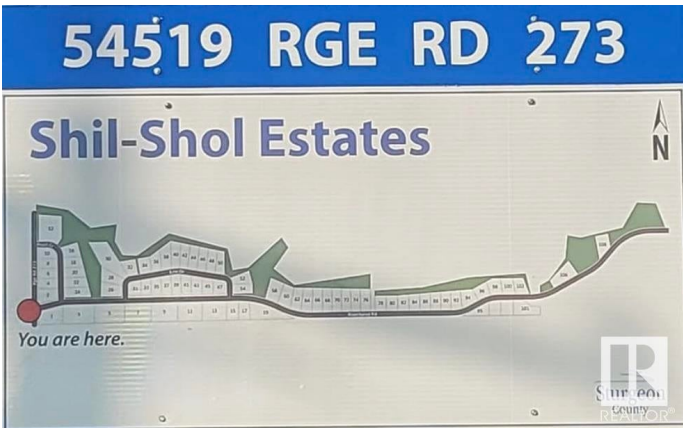
Essential Information

| | |
|-----------|-----------------|
| MLS® # | E4429365 |
| Price | \$234,500 |
| Bathrooms | 0.00 |
| Acres | 1.47 |
| Type | Rural |
| Sub-Type | Vacant Lot/Land |
| Status | Active |

Community Information

| | |
|-------------|-----------------------|
| Address | 103 Riverbend Road |
| Area | Rural Sturgeon County |
| Subdivision | Shil Shol Estate |
| City | Rural Sturgeon County |
| County | ALBERTA |
| Province | AB |
| Postal Code | T0G 0J0 |

Exterior



Exterior Features Flat Site, Treed Lot, See Remarks

Additional Information

Date Listed April 4th, 2025

Days on Market 15

Zoning Zone 70

DATA IS DEEMED RELIABLE BUT IS NOT GUARANTEED ACCURATE BY THE REALTORS® ASSOCIATION OF EDMONTON. COPYRIGHT 2025 BY THE REALTORS® ASSOCIATION OF EDMONTON. ALL RIGHTS RESERVED.Trademarks are owned or controlled by the Canadian Real Estate Association (CREA) and identify real estate professionals who are members of CREA (REALTOR®, REALTORS®) and/or the quality of services they provide (MLS®, Multiple Listing Service®)

Listing information last updated on April 19th, 2025 at 7:17am MDT