

## \$219,000 - 22 Willowdale Place, Edmonton

MLS® #E4427918

**\$219,000**

3 Bedroom, 1.50 Bathroom, 920 sqft  
Condo / Townhouse on 0.00 Acres

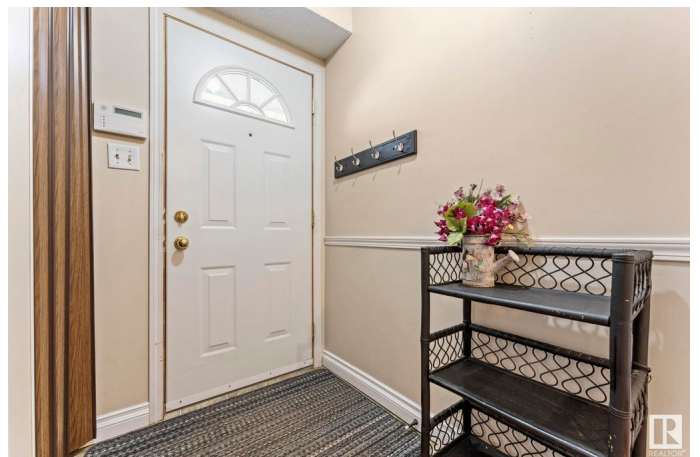
Ormsby Place, Edmonton, AB

Don't miss this rare find in Ormsby Place - this is one of the few townhomes in the area with a private yard, featuring brand-new fence and grading in 2024! This well-kept 3 bedroom, 1.5 bathroom townhome offers 1,016 sq ft of comfortable living space. Freshly painted bedrooms, bathrooms and living room. Fully finished basement (2024) for extra living space. New washing machine (2024), Hot Water Tank (2018), Furnace (2008). Don't miss this fantastic opportunity to own a move-in-ready home in a great location, close to schools, walking trails, parks, shopping centres all while in close proximity to the Henday & Whitemud for easy access around the city. \*Primary bedroom photos are virtually staged.

Built in 1976

### Essential Information

MLS® #	E4427918
Price	\$219,000
Bedrooms	3
Bathrooms	1.50
Full Baths	1
Half Baths	1
Square Footage	920
Acres	0.00



Year Built	1976
Type	Condo / Townhouse
Sub-Type	Townhouse
Style	2 Storey
Status	Active

### **Community Information**

Address	22 Willowdale Place
Area	Edmonton
Subdivision	Ormsby Place
City	Edmonton
County	ALBERTA
Province	AB
Postal Code	T5T 1Z4

### **Amenities**

Amenities	No Animal Home, No Smoking Home
Parking	Stall

### **Interior**

Appliances	Dishwasher-Built-In, Dryer, Refrigerator, Stove-Electric, Washer, Window Coverings
Heating	Forced Air-1, Natural Gas
Stories	3
Has Basement	Yes
Basement	Full, Finished

### **Exterior**

Exterior	Wood, Stucco, Vinyl
Exterior Features	Fenced, Low Maintenance Landscape, Playground Nearby, Public Transportation, Schools, Shopping Nearby
Roof	Asphalt Shingles
Construction	Wood, Stucco, Vinyl
Foundation	Concrete Perimeter

### **Additional Information**

Date Listed	March 28th, 2025
Days on Market	13
Zoning	Zone 20

Condo Fee            \$414

DATA IS DEEMED RELIABLE BUT IS NOT GUARANTEED ACCURATE BY THE REALTORS® ASSOCIATION OF EDMONTON. COPYRIGHT 2025 BY THE REALTORS® ASSOCIATION OF EDMONTON. ALL RIGHTS RESERVED. Trademarks are owned or controlled by the Canadian Real Estate Association (CREA) and identify real estate professionals who are members of CREA (REALTOR®, REALTORS®) and/or the quality of services they provide (MLS®, Multiple Listing Service®)

Listing information last updated on April 10th, 2025 at 1:03pm MDT