

Courtesy Of Thomas B Scott Of RE/MAX River City

\$349,900 - 126 Kiniski Crescent, Edmonton

MLS® #E4425248

\$349,900

3 Bedroom, 1.00 Bathroom, 1,008 sqft
Single Family on 0.00 Acres

Kiniski Gardens, Edmonton, AB

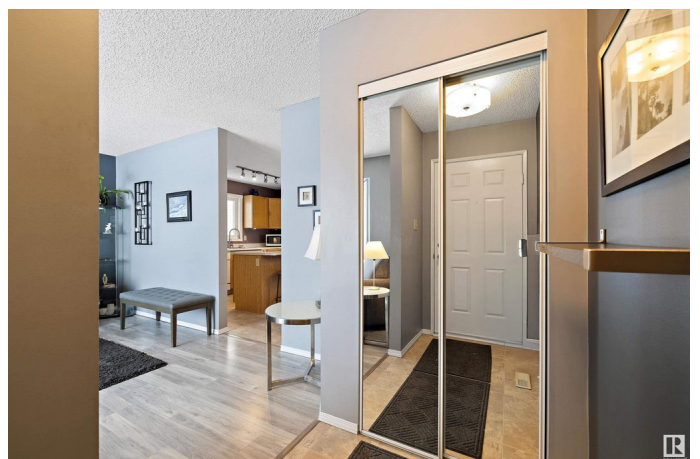
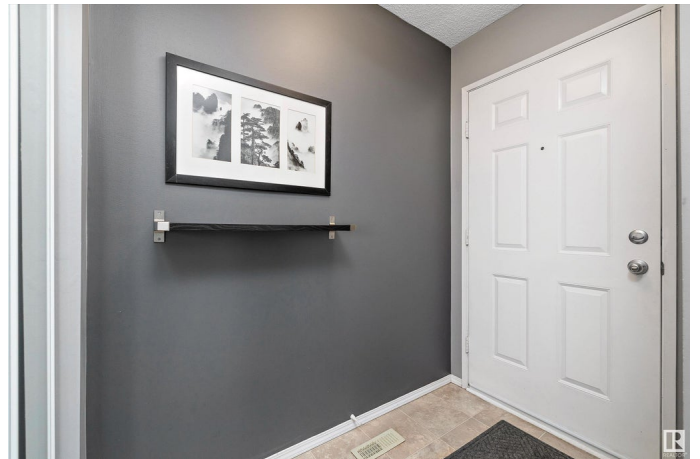
Lovingly maintained family home in the charming Southeast neighborhood of Kiniski Gardens! Perfectly situated close to schools, shopping, green spaces, the rec center, and all of life's other amenities. This 1,008 sqft home is move-in ready! The main floor features new flooring throughout the sun-drenched living room, which is adjacent to the large eat-in kitchen with tons of storage and a convenient island with seating. Step past the dining room, outside, and onto the gorgeous cedar deck, or into the large fenced backyard, complete with a double parking pad. Upstairs are three large bedrooms and a 4-piece bathroom with a new tub surround (2023 - Lifetime warranty!). The lower two levels offer unlimited storage options or future development of your choice. Enjoy maintenance-free living with these recent upgrades: 30-year shingles (2007), new windows and patio door (2015), concrete sidewalks (2022), new HWT (2023), furnace service and component upgrade (2021). Love where you live!

Built in 1988

Essential Information

MLS® # E4425248

Price \$349,900



Bedrooms	3
Bathrooms	1.00
Full Baths	1
Square Footage	1,008
Acres	0.00
Year Built	1988
Type	Single Family
Sub-Type	Detached Single Family
Style	4 Level Split
Status	Active

Community Information

Address	126 Kiniski Crescent
Area	Edmonton
Subdivision	Kiniski Gardens
City	Edmonton
County	ALBERTA
Province	AB
Postal Code	T6L 5A9

Amenities

Amenities	Deck, Vinyl Windows, See Remarks
Parking	Parking Pad Cement/Paved

Interior

Appliances	Dishwasher-Built-In, Dryer, Refrigerator, Storage Shed, Stove-Electric, Washer
Heating	Forced Air-1, Natural Gas
Stories	2
Has Basement	Yes
Basement	Full, Unfinished

Exterior

Exterior	Wood, Vinyl
Exterior Features	Back Lane, Golf Nearby, Low Maintenance Landscape, Playground Nearby, Public Swimming Pool, Public Transportation, Schools, Shopping Nearby, See Remarks
Roof	Asphalt Shingles
Construction	Wood, Vinyl

Foundation Concrete Perimeter

Additional Information

Date Listed March 12th, 2025

Days on Market 2

Zoning Zone 29

DATA IS DEEMED RELIABLE BUT IS NOT GUARANTEED ACCURATE BY THE REALTORS® ASSOCIATION OF EDMONTON. COPYRIGHT 2025 BY THE REALTORS® ASSOCIATION OF EDMONTON. ALL RIGHTS RESERVED. Trademarks are owned or controlled by the Canadian Real Estate Association (CREA) and identify real estate professionals who are members of CREA (REALTOR®, REALTORS®) and/or the quality of services they provide (MLS®, Multiple Listing Service®)

Listing information last updated on March 14th, 2025 at 1:22pm MDT