

\$175,000 - 305 10118 95 Street, Edmonton

MLS® #E4422202

\$175,000

2 Bedroom, 2.00 Bathroom, 876 sqft
Condo / Townhouse on 0.00 Acres

Boyle Street, Edmonton, AB

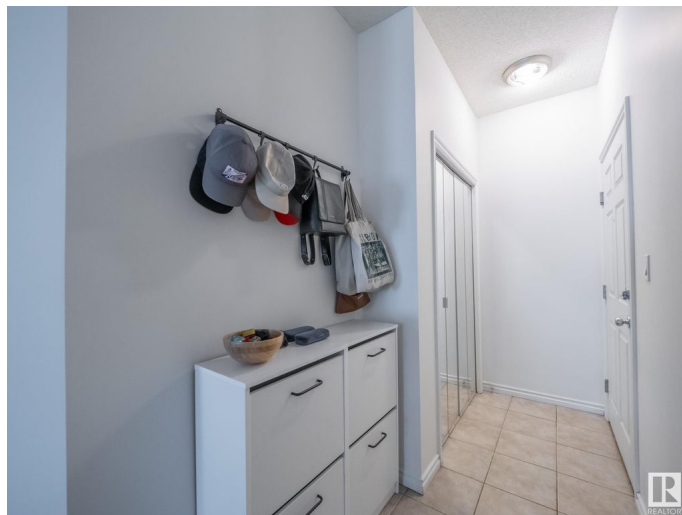
Welcome to The Chadwick, a lovely condo just steps to the river valley and close to downtown. This 3rd floor, 875sqft unit offers 2 bedrooms and 2 full bathrooms. The open concept kitchen has plenty of cupboard and counter space which opens directly into the dining room and living room with access to the southwest facing balcony offering great views of the city. The condo is completed with large in-suite laundry room and 1 underground titled parking stall. A wonderful option for first time buyers, students, or investors.

Built in 2004

Essential Information

MLS® #	E4422202
Price	\$175,000
Bedrooms	2
Bathrooms	2.00
Full Baths	2
Square Footage	876
Acres	0.00
Year Built	2004
Type	Condo / Townhouse
Sub-Type	Lowrise Apartment
Style	Single Level Apartment
Status	Active

Community Information



Address	305 10118 95 Street
Area	Edmonton
Subdivision	Boyle Street
City	Edmonton
County	ALBERTA
Province	AB
Postal Code	T5H 4R6

Amenities

Amenities	Ceiling 9 ft., Detectors Smoke, Intercom, No Animal Home, No Smoking Home, Parking-Visitor, Security Door, Storage-In-Suite, Television Connection
Parking	Underground

Interior

Interior Features	ensuite bathroom
Appliances	Dishwasher - Energy Star, Dryer, Hood Fan, Refrigerator, Stove-Electric, Washer, Window Coverings
Heating	Hot Water, Natural Gas
# of Stories	4
Stories	1
Has Basement	Yes
Basement	None, No Basement

Exterior

Exterior	Wood, Stucco
Exterior Features	Back Lane, Backs Onto Park/Trees, Flat Site, Golf Nearby, Low Maintenance Landscape, Playground Nearby, Public Transportation, River Valley View, Schools, Shopping Nearby, Ski Hill Nearby, View City
Roof	Flat
Construction	Wood, Stucco
Foundation	Concrete Perimeter

Additional Information

Date Listed	February 20th, 2025
Days on Market	63
Zoning	Zone 13
Condo Fee	\$595

DATA IS DEEMED RELIABLE BUT IS NOT GUARANTEED ACCURATE BY THE REALTORS® ASSOCIATION OF EDMONTON. COPYRIGHT 2025 BY THE REALTORS® ASSOCIATION OF EDMONTON. ALL RIGHTS

RESERVED. Trademarks are owned or controlled by the Canadian Real Estate Association (CREA) and identify real estate professionals who are members of CREA (REALTOR®®, REALTORS®®) and/or the quality of services they provide (MLS®®, Multiple Listing Service®®)

Listing information last updated on April 24th, 2025 at 4:17am MDT