

\$510,000 - 17043 38 Street, Edmonton

MLS® #E4421880

\$510,000

3 Bedroom, 2.50 Bathroom, 1,750 sqft
Single Family on 0.00 Acres

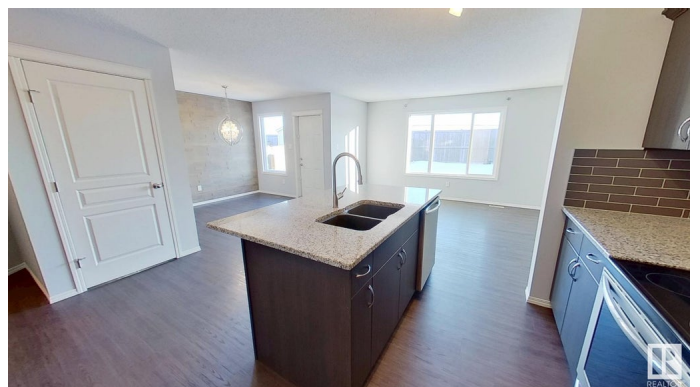
Cy Becker, Edmonton, AB

This beautifully maintained property offers the perfect blend of comfort and convenience. Located in a prime area, it is just minutes from schools, shopping centers, and easy access to the Anthony Henday. Surrounded by numerous parks and walking trails, itâ€™s ideal for outdoor enthusiasts and families alike. The neighborhood is friendly and welcoming, with plenty of playgrounds and green spaces for children to enjoy. Inside, the home boasts spacious, well-lit living areas designed for both relaxation and entertaining. Beautiful view of the neighborhood pond from the master bedroom. A must see for those seeking a vibrant and family-friendly community.

Built in 2015

Essential Information

| | |
|----------------|---------------|
| MLS® # | E4421880 |
| Price | \$510,000 |
| Bedrooms | 3 |
| Bathrooms | 2.50 |
| Full Baths | 2 |
| Half Baths | 1 |
| Square Footage | 1,750 |
| Acres | 0.00 |
| Year Built | 2015 |
| Type | Single Family |



| | |
|----------|------------------------|
| Sub-Type | Detached Single Family |
| Style | 2 Storey |
| Status | Active |

Community Information

| | |
|-------------|-----------------|
| Address | 17043 38 Street |
| Area | Edmonton |
| Subdivision | Cy Becker |
| City | Edmonton |
| County | ALBERTA |
| Province | AB |
| Postal Code | T5Y 3S1 |

Amenities

| | |
|-----------|---|
| Amenities | Detectors Smoke, Front Porch, Hot Water Natural Gas, No Smoking Home, Smart/Program. Thermostat |
| Parking | Double Garage Attached, Front Drive Access, Insulated |

Interior

| | |
|-------------------|--|
| Interior Features | ensuite bathroom |
| Appliances | Dishwasher-Built-In, Dryer, Garage Control, Garage Opener, Hood Fan, Humidifier-Power(Furnace), Oven-Microwave, Refrigerator, Stove-Electric, Washer |
| Heating | Forced Air-1, Natural Gas |
| Stories | 2 |
| Has Basement | Yes |
| Basement | Full, Unfinished |

Exterior

| | |
|-------------------|---|
| Exterior | Wood, Stone, Vinyl |
| Exterior Features | Backs Onto Park/Trees, Fenced, Landscaped, Playground Nearby, Public Transportation, Schools, Shopping Nearby |
| Roof | Asphalt Shingles |
| Construction | Wood, Stone, Vinyl |
| Foundation | Concrete Perimeter |

Additional Information

| | |
|----------------|---------------------|
| Date Listed | February 18th, 2025 |
| Days on Market | 49 |
| Zoning | Zone 03 |

DATA IS DEEMED RELIABLE BUT IS NOT GUARANTEED ACCURATE BY THE REALTORS® ASSOCIATION OF EDMONTON. COPYRIGHT 2025 BY THE REALTORS® ASSOCIATION OF EDMONTON. ALL RIGHTS RESERVED. Trademarks are owned or controlled by the Canadian Real Estate Association (CREA) and identify real estate professionals who are members of CREA (REALTOR®, REALTORS®) and/or the quality of services they provide (MLS®, Multiple Listing Service®)

Listing information last updated on April 8th, 2025 at 5:17am MDT