

Courtesy Of Sunny Gill Of Exp Realty

## \$489,900 - 711 89 Street, Edmonton

MLS® #E4420323

**\$489,900**

3 Bedroom, 2.50 Bathroom, 1,387 sqft

Single Family on 0.00 Acres

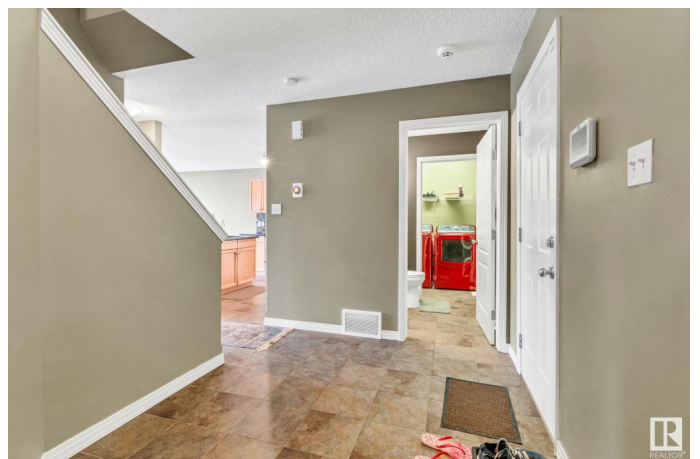
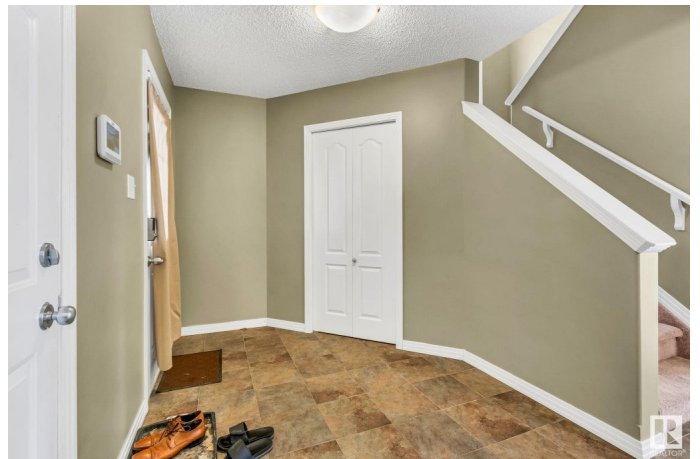
Ellerslie, Edmonton, AB

Step into this immaculate home, where charm and comfort await. Enter through a large tiled foyer that opens into a bright, open-concept great room with hardwood floors and a cozy gas fireplace. The kitchen is equipped with granite countertops and a handy corner pantry. The main floor also offers a half bath and a convenient laundry area. Upstairs, three spacious bedrooms await, including a primary suite with a walk-in closet and a full ensuite featuring a jetted tub. The partially finished basement adds a fourth bedroom—ideal for an office or extra guest space. Outside, the double attached heated garage offers wonderful storage for a mechanic or those who enjoy working on vehicles. The fully fenced backyard is perfect for entertaining, with room for family and friends. Located in a friendly, established neighborhood close to shops, schools, and parks

Built in 2002

### Essential Information

MLS® #	E4420323
Price	\$489,900
Bedrooms	3
Bathrooms	2.50
Full Baths	2
Half Baths	1



Square Footage	1,387
Acres	0.00
Year Built	2002
Type	Single Family
Sub-Type	Detached Single Family
Style	2 Storey
Status	Active

### **Community Information**

Address	711 89 Street
Area	Edmonton
Subdivision	Ellerslie
City	Edmonton
County	ALBERTA
Province	AB
Postal Code	T6X 1B9

### **Amenities**

Amenities	Air Conditioner, Deck, No Animal Home, No Smoking Home
Parking Spaces	4
Parking	Double Garage Attached

### **Interior**

Interior Features	ensuite bathroom
Appliances	Air Conditioning-Central, Dishwasher-Built-In, Dryer, Garage Control, Garage Opener, Microwave Hood Fan, Refrigerator, Storage Shed, Stove-Electric, Washer, Window Coverings, TV Wall Mount
Heating	Forced Air-1, Natural Gas
Fireplace	Yes
Fireplaces	Corner, Mantel, Tile Surround
Stories	2
Has Basement	Yes
Basement	Full, Partially Finished

### **Exterior**

Exterior	Wood, Brick, Vinyl
Exterior Features	Airport Nearby, Cul-De-Sac, Fenced, Fruit Trees/Shrubs, Landscaped, Playground Nearby, Schools, Shopping Nearby
Roof	Asphalt Shingles

Construction	Wood, Brick, Vinyl
Foundation	Concrete Perimeter

### **School Information**

Elementary	Sakwa School
Middle	kisÅªwÅ«tisiwin School
High	J. Percy Page School

### **Additional Information**

Date Listed	February 5th, 2025
Days on Market	37
Zoning	Zone 53

DATA IS DEEMED RELIABLE BUT IS NOT GUARANTEED ACCURATE BY THE REALTORS® ASSOCIATION OF EDMONTON. COPYRIGHT 2025 BY THE REALTORS® ASSOCIATION OF EDMONTON. ALL RIGHTS RESERVED. Trademarks are owned or controlled by the Canadian Real Estate Association (CREA) and identify real estate professionals who are members of CREA (REALTOR®, REALTORS®) and/or the quality of services they provide (MLS®, Multiple Listing Service®)

Listing information last updated on March 14th, 2025 at 7:32pm MDT