

\$724,900 - 32 Rosewood Way, St. Albert

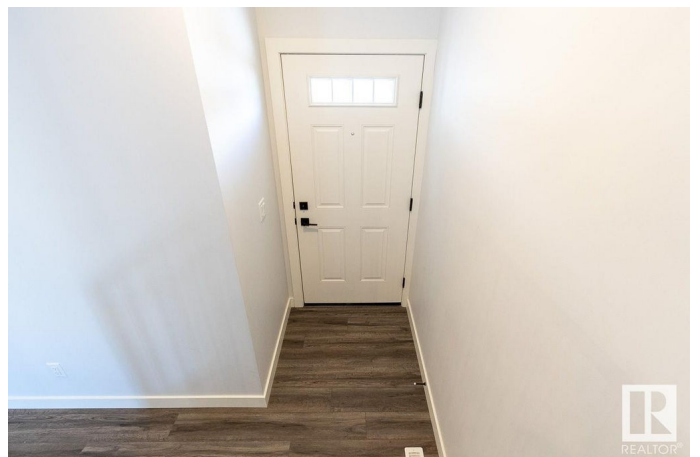
MLS® #E4416258

\$724,900

5 Bedroom, 4.00 Bathroom, 2,266 sqft
Single Family on 0.00 Acres

Riverside (St. Albert), St. Albert, AB

Check out this STUNNING brand-new, San Rufo built two-storey with a fully finished LEGAL BASEMENT SUITE on a corner lot in Riverside. The open concept main level is the perfect space to entertain family and friends. The kitchen is accented by the large QUARTZ island with eating bar, walk through pantry, and STAINLESS STEEL APPLIANCES. A 4th bedroom and 3pce bathroom complete the main level. Upstairs find the spacious primary bedroom with WALK-IN CLOSET & 5 PCE ENSUITE. Two more additional bedrooms, a 4 pce bath, huge laundry room, and open bonus room finish this upper space. The one-bedroom BASEMENT SUITE is complete with a full kitchen featuring stainless steel appliances, laundry, multiple storage closets, separate side entrance, and generous living space. AMAZING LOCATION is close to grocery, restaurants, professional, walking trails, dog park, Ray Gibbon & Anthony Henday, and the rest of the amenities St. Albert has to offer. Don't miss your OPPORTUNITY TO OWN this incredible space!



Built in 2024

Essential Information

MLS® #	E4416258
Price	\$724,900

Bedrooms	5
Bathrooms	4.00
Full Baths	4
Square Footage	2,266
Acres	0.00
Year Built	2024
Type	Single Family
Sub-Type	Detached Single Family
Style	2 Storey
Status	Active

Community Information

Address	32 Rosewood Way
Area	St. Albert
Subdivision	Riverside (St. Albert)
City	St. Albert
County	ALBERTA
Province	AB
Postal Code	T8N 7Y8

Amenities

Amenities	On Street Parking, Ceiling 9 ft., Closet Organizers, No Animal Home, No Smoking Home, Parking-Extra, Vinyl Windows
Parking	Double Garage Attached

Interior

Interior Features	ensuite bathroom
Appliances	Garage Control, Garage Opener, Dryer-Two, Refrigerators-Two, Stoves-Two, Washers-Two, Dishwasher-Two, Microwave Hood Fan-Two
Heating	Forced Air-2, Natural Gas
Stories	3
Has Basement	Yes
Basement	Full, Finished

Exterior

Exterior	Wood, Hardie Board Siding, Stone, Vinyl
Exterior Features	Corner Lot, Golf Nearby, Playground Nearby, Public Transportation, Shopping Nearby, Partially Fenced
Roof	Asphalt Shingles

Construction Wood, Hardie Board Siding, Stone, Vinyl
Foundation Concrete Perimeter

Additional Information

Date Listed December 17th, 2024
Days on Market 116
Zoning Zone 24

DATA IS DEEMED RELIABLE BUT IS NOT GUARANTEED ACCURATE BY THE REALTORS® ASSOCIATION OF EDMONTON. COPYRIGHT 2025 BY THE REALTORS® ASSOCIATION OF EDMONTON. ALL RIGHTS RESERVED. Trademarks are owned or controlled by the Canadian Real Estate Association (CREA) and identify real estate professionals who are members of CREA (REALTOR®, REALTORS®) and/or the quality of services they provide (MLS®, Multiple Listing Service®)

Listing information last updated on April 12th, 2025 at 1:17am MDT