

\$659,900 - 9308 183 Avenue, Edmonton

MLS® #E4396972

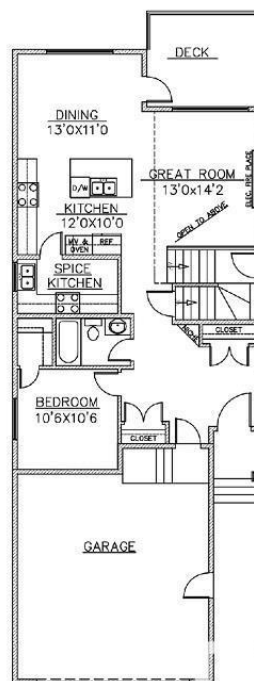
\$659,900

4 Bedroom, 3.00 Bathroom, 2,184 sqft

Single Family on 0.00 Acres

Klarvatten, Edmonton, AB

Get Elegant Home with 4 Bedrooms, 3 Full Washrooms, 2 Living Rooms, Deck, On Regular Lot with Walk Out Basement. This Luxury Lifestyle Single Family Front Attached Garage Home has Main Floor with 9ft Ceiling, Large foyer, Bedroom, 4 Pcs Washroom, Pantry, SPICE KITCHEN & main Kitchen with Quartz Counters, Open to Below Great Room with High Ceiling, Featured Wall & Electric Fire Place installed, Dinning Nook, Huge Windows & fully built Deck with huge open back Green Space view. Stairs with Glass Railings gives Luxurious look. Upper Floor has Huge Master Bedroom with 5 Pcs Ensuite & Walk In Closet with Shelving, 2 Gentlesize Bedrooms with Windows, 4 pcs Washroom, Laundry Room & Family Bonus Room. Side Entrance to Basement. Basement is unfinished & awaits personal touch to develop & has permit to Legal Suite. \$5000 Appliance Credit by builder. Opportunity to select & choose the interiors' styles, colors(flooring, plumbing, wall etc.). The side Windows make Home more bright throughout. A Perfect LUXURY Home...



Main Floor - 1037 sq.ft.

Built in 2024

Essential Information

MLS® # E4396972

Price \$659,900

Bedrooms	4
Bathrooms	3.00
Full Baths	3
Square Footage	2,184
Acres	0.00
Year Built	2024
Type	Single Family
Sub-Type	Detached Single Family
Style	2 Storey
Status	Active

Community Information

Address	9308 183 Avenue
Area	Edmonton
Subdivision	Klarvatten
City	Edmonton
County	ALBERTA
Province	AB
Postal Code	T5Z 0V1

Amenities

Amenities	Carbon Monoxide Detectors, Ceiling 9 ft., Deck, Hot Water Natural Gas, Walkout Basement, Natural Gas Stove Hookup
Parking Spaces	4
Parking	2 Outdoor Stalls, Double Garage Attached

Interior

Interior Features	ensuite bathroom
Appliances	Builder Appliance Credit
Heating	Forced Air-1, Natural Gas
Fireplace	Yes
Fireplaces	Wall Mount
Stories	2
Has Basement	Yes
Basement	Full, Unfinished

Exterior

Exterior	Wood, Vinyl
Exterior Features	Park/Reserve, Schools, Stream/Pond

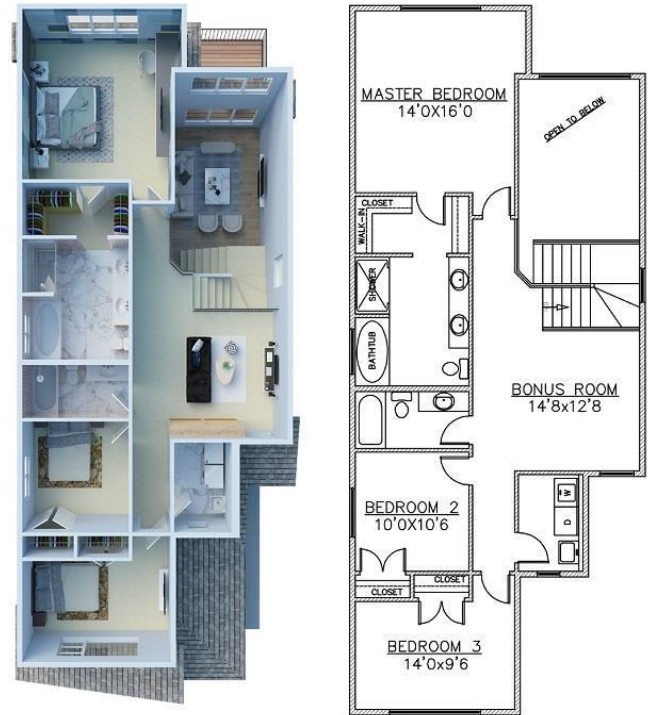
Roof Vinyl Shingles
Construction Wood, Vinyl
Foundation Concrete Perimeter

School Information

Elementary LagoLindo Elementary
Middle Florence Hallock
High M.E. LaZerte School

Additional Information

Date Listed July 11th, 2024
Days on Market 275
Zoning Zone 28



Upper Floor - 1147 sq.ft.

DATA IS DEEMED RELIABLE BUT IS NOT GUARANTEED ACCURATE BY THE REALTORS® ASSOCIATION OF EDMONTON. COPYRIGHT 2025 BY THE REALTORS® ASSOCIATION OF EDMONTON. ALL RIGHTS RESERVED. Trademarks are owned or controlled by the Canadian Real Estate Association (CREA) and identify real estate professionals who are members of CREA (REALTOR®, REALTORS®) and/or the quality of services they provide (MLS®, Multiple Listing Service®)

Listing information last updated on April 12th, 2025 at 1:17am MDT